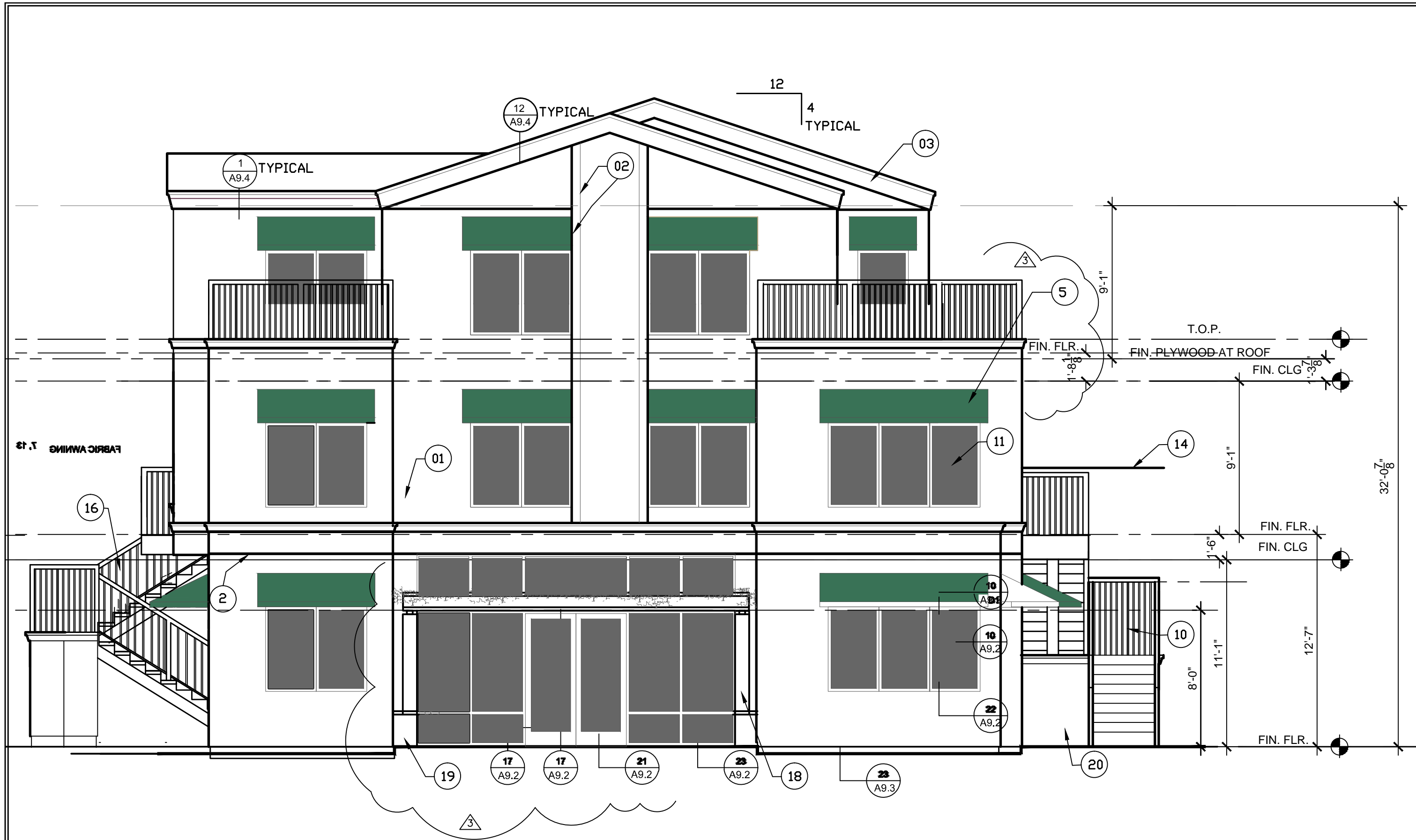
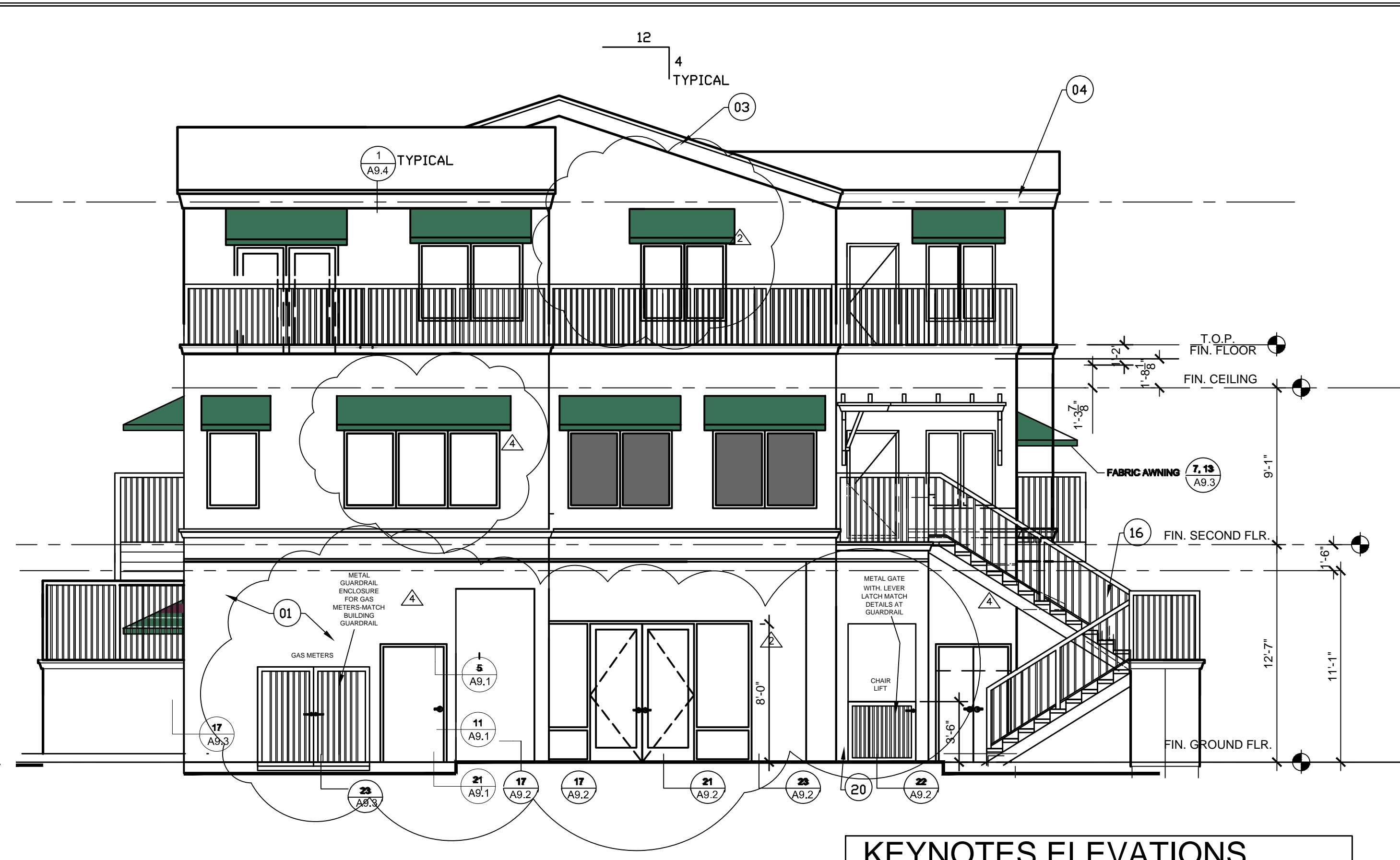


Feb 24, 2014 - 1005pm EN1 BEDROOM-STUDIO COMMUNITY BLDG extended awning -ADA ELEVATION AT PORTER A2.21-A2.25-REVISED FOR WELYONS BID FOR DOOR SCHEDULE 1-14-2014.dwg



FRONT ELEVATION (SOUTH)



NORTH ELEVATION



PORTER STREET ELEVATION (WEST)

KEYNOTES ELEVATIONS

- 01 3 COATS OF CEMENT PLASTER SYSTEM WITH ACRYLIC FINISH
- 02 2" ALUMINUM REVEAL
- 03 EPS TRIM G.I. CAPPING
- 04 EPS TRIM
- 05 FABRIC AWNING
- 06 G.I. SCUPPER CONDUCTOR
- 07 METAL & WOOD TRELLIS
- 08 METAL STAIRS
- 09 WOOD TRELLIS
- 10 METAL STAIRS
- 11 VINYL WINDOW. SEE WINDOW SCHEDULE
- 12 ALUMINUM STOREFRONT SYSTEM - SEE WINDOW SCHEDULE
- 13 EXTERIOR WOOD DOORS, SEE DOOR SCHEDULE
- 14 STEEL RAILING
- 15 VINYL WINDOW
- 16 MTL. RAILING
- 17 LOUVER DOOR
- 18 WOOD COLUMN
- 19 PLANTER BOX
- 20 WHEEL CHAIR LIFT
- 21 6" WOOD FENCE-SELECTION BY OWNER
- 22 EXHAUST FAN OUTLET

GENERAL NOTES

- A. ALL DIMENSIONS ARE TO FACE OF STUD OR CENTERLINE OF PARTITION WALL, INTERIOR COLUMN/ WINDOW/ DOOR UNLESS OTHERWISE NOTED.
- B. DETAILS ARE KEYED AND NOTED "TYPICAL" ONLY ONCE ON THE PLANS WHEN THEY FIRST OCCUR, AND ARE REPRESENTATIVE OF SIMILAR CONDITIONS THROUGHOUT, UNLESS OTHERWISE NOTED.
- C. FOR DOOR AND WINDOW KEYS REFER TO DOOR AND WINDOW SCHEDULE.

LEGEND

- ONE HOUR RATED WALL
- INTERIOR FULL HT. PARTITION
- INTERIOR BEARING PARTITION WALL
- EPS TRIM - MOLDING

DRAWINGS FOR REVIEW AND BIDDING PURPOSES ONLY-NOT FOR CONSTRUCTION. SUBMIT RFI FOR CONFLICT OR INFORMATION NOT SHOWN

REVISIONS		BY
9/26/2011	PLAN CHECK	G.O.
1/ 08 / 14	BIDDING	T.O.
GUARDRAIL AND WINDOWS		
REVISION: PARAPET RAISED FOR BUILT UP ROOF, 9'-9" CLG., 7"		
STOREFRONT DOORS, WINDOWS		
REVISED		
BIDDING		
REVISION		

JOSEPH OAKLEY
No. 15457
REN. 9-30015
STATE OF CALIFORNIA

PROJECT TITLE: COMMUNITY CENTER
HARBOR PARK APARTMENTS
969 PORTER STREET, VALLEJO, CA 94560
DRAWING TITLE: SECOND FLOOR PLAN

OAKLEY & OAKLEY
ARCHITECT, CIVIL & STRUCTURAL ENGINEERS
7000 EDDOWATER DRIVE, SUITE 615
VALLEJO, CA 94581
TEL: 925.602.4621
FAX: 925.602.6043

Date:	08/30/2011
Scale:	3/16" = 1'-0"
Drawn:	STAFF
Checked:	RY
Job No.:	2011-09
Sheet:	A2.24
Of	Sheets