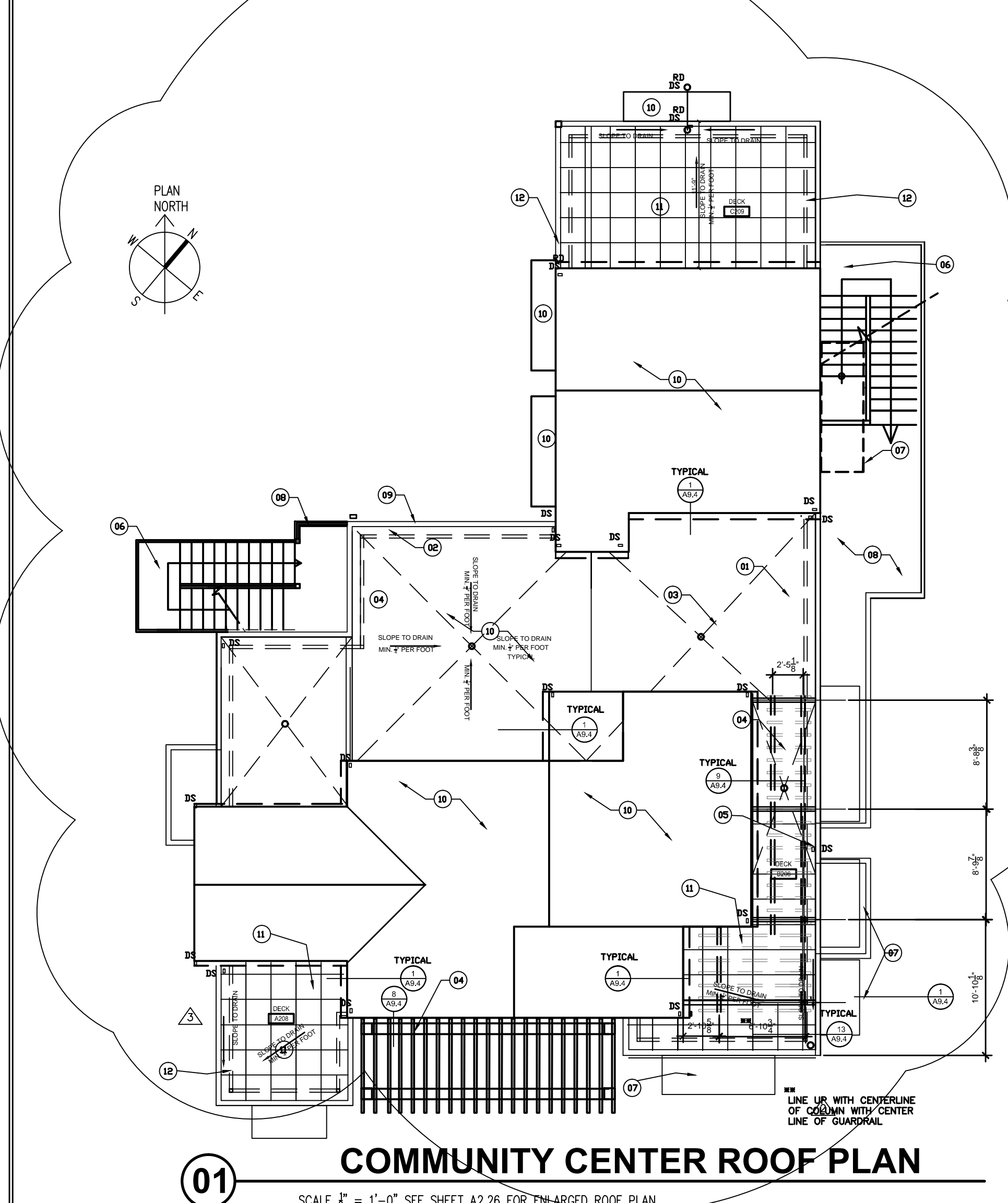
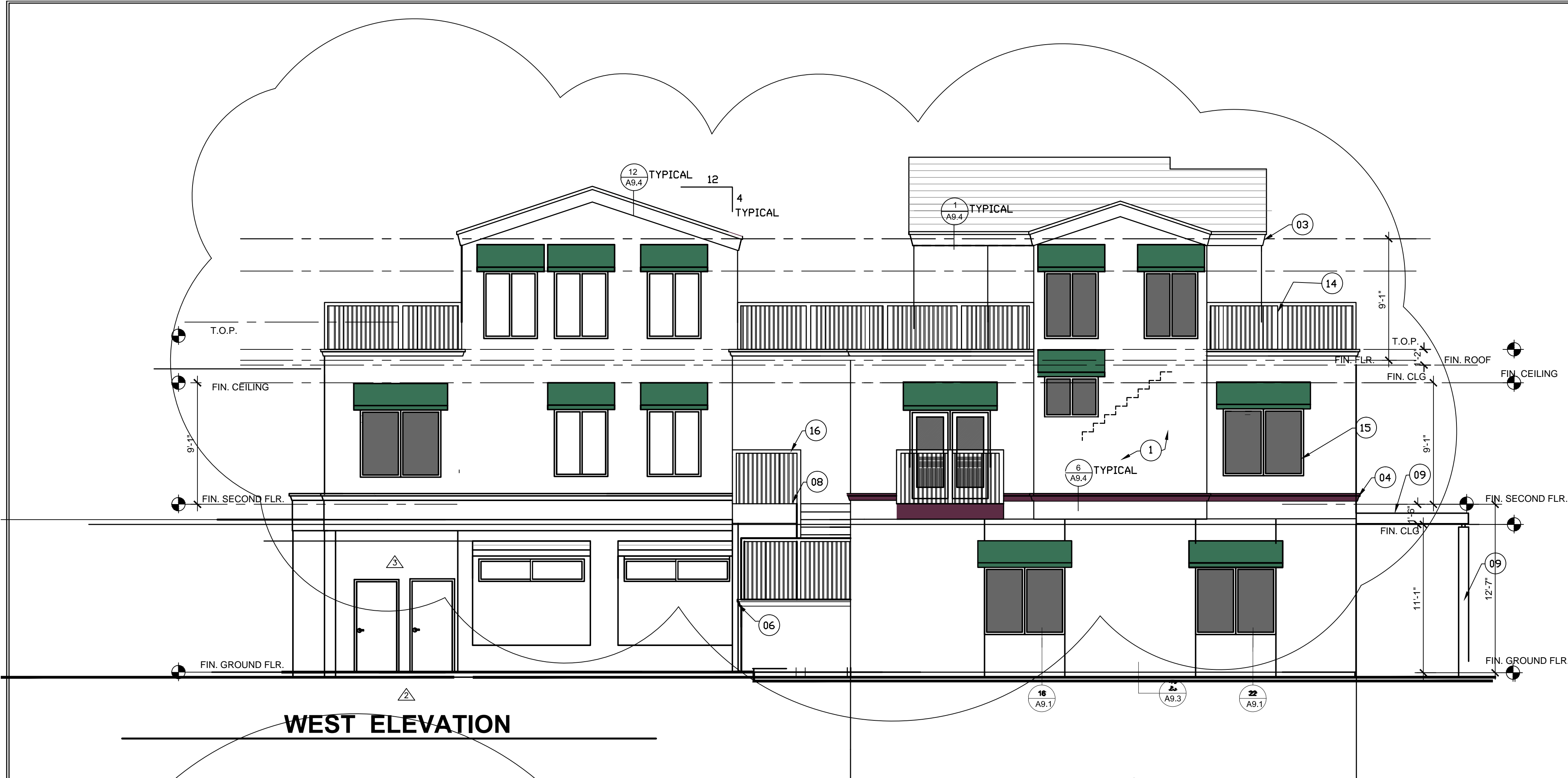


Mar 28, 2014 - 7:11am Z:\Year 2011 Jobs\2011-09.3 - Community Bldg.dwg drawings\ARCHITECTURE\A2.21-A2.26 REVISED 3-26-2014.dwg



KEYNOTES ROOF PLAN

- 01 ROOF CRICKET.
- 02 ROOF LINE OF PARAPET.
- 03 BUILT UP ROOF WITH 90 LB. CAP SHEET CLASS B ROOF SYSTEM. PROVIDE MIN 1/4" SLOPE @ VALLEY
- 04 TRELLIS W/ WOOD FRAME WITH STEEL POSTS
- 05 THROUGH WALL SCUPPER AND 3X4 DOWN SPOUT. TERMINATE AT DOWNSPOUT AT SPLASH BLOCK.
- 06 EXTERIOR STAIRS BELOW
- 07 FABRIC AWNING BELOW.
- 08 DECKING BELOW.
- 09 CORNICE AT EDGE OF PARAPET.
- 10 ASPHALT SHINGLE ROOF
- 11 ROOF DECK
- 12 METAL RAIL

GENERAL NOTES

- A. ALL RAIN WATER LEADERS & DOWNSPOUT BE CONNECTED TO STORM DRAIN SYSTEM.
- B. ALL DIMENSIONS ARE TO FACE OF STUDS OR CENTER OF COLUMN LINE AS APPLICABLE, UNO

LEGEND

- CRICKET. SEE DET. SHEET A9.3

KEYNOTES ELEVATIONS

- 01 3 COATS OF CEMENT PLASTER SYSTEM
- 02 2" ALUMINUM REVEAL
- 03 EPS TRIM G.I. CAPPING
- 04 EPS TRIM
- 05 FABRIC AWNING
- 06 G.I. SCUPPER CONDUCTOR
- 07 METAL & WOOD TRELLIS
- 08 METAL STAIRS
- 09 WOOD TRELLIS
- 10 METAL STAIRS
- 11 VINYL WINDOW. SEE WINDOW SCHEDULE
- 12 ALUMINUM STOREFRONT SYSTEM. SEE WINDOW SCHEDULE
- 13 EXTERIOR WOOD DOORS, SEE DOOR SCHEDULE
- 14 STEEL RAILING.
- 15 VINYL WINDOW
- 16 MTL. RAILING.
- 17 LOUVER DOOR
- 18 STL. COLUMN. SED
- 19 PLANTER BOX.

GENERAL NOTES

- A. ALL DIMENSIONS ARE TO FACE OF STUD OR CENTERLINE OF PARTITION WALL, INTERIOR COLUMN/ WINDOW/ DOOR UNLESS OTHERWISE NOTED.
- B. DETAILS ARE KEYED AND NOTED 'TYPICAL' ONLY ONCE ON THE PLANS WHEN THEY FIRST OCCUR, AND ARE REPRESENTATIVE OF SIMILAR CONDITIONS THROUGHOUT, UNLESS OTHERWISE NOTED.
- C. FOR DOOR AND WINDOW KEYS REFER TO DOOR AND WINDOW SCHEDULE.

LEGEND

- ONE HOUR RATED WALL
- INTERIOR FULL HT. PARTITION
- INTERIOR BEARING PARTITION WALL
- EPS TRIM - MOLDING

DRAWINGS FOR REVIEW AND BIDDING PURPOSES ONLY-NOT FOR CONSTRUCTION. SUBMIT RFI FOR CONFLICTS OR INFORMATION NOT SHOWN

REVISIONS		BY
9/26/2011 - PLAN CHECK	G.O.	
1/09/2014	STF	
GUARDAIL REVISED		
1/09/2014		
REVISED ROOF DRAINAGE		
1-10-2014		
REVISED ROOF DRAINAGE, WINDOWS AT HALLWAY		

JOSEPH OAKLEY
No. 15457
REN. 9-30415
STATE OF CALIFORNIA

OAKLEY & OAKLEY
ARCHITECT, CIVIL & STRUCTURAL ENGINEERS
7700 EDGEMOUNT DRIVE, SUITE 615
SAN JOSE, CA 95129
TEL: 408.262.6021
FAX: 408.262.6043

PROJECT TITLE:
COMMUNITY CENTER
HARBOR PARK APARTMENTS
969 PORTER STREET, VALLEJO, CA 94560

DRAWING TITLE:
LEFT ELEVATION AND ROOF PLAN
CHAIR LIFT DETAILS

Date:	04/10/2012
Scale:	3/16" = 1'-0"
Drawn:	STAFF
Checked:	RY
Job No.:	2011-09
Sheet:	A2.25
Of	Sheets