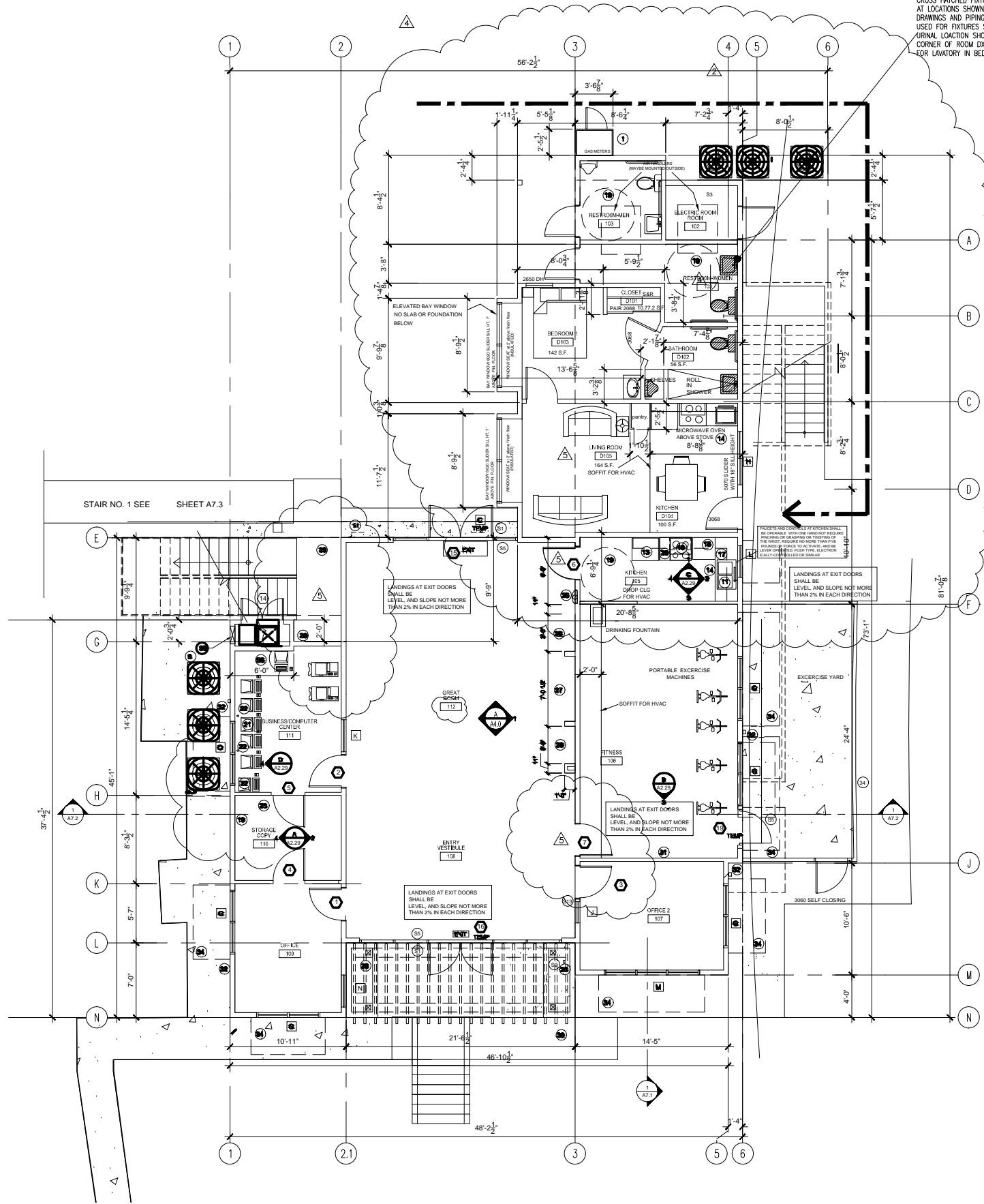


Mar 28, 2014 - 7:33am Z:\Year 2011 Jobs\2011-09.3 - Community Bldg\dwg drawings\ARCHITECTURE\A2.1 REVISED WITH 1 BEDROOM UNITS-21-2014.dwg



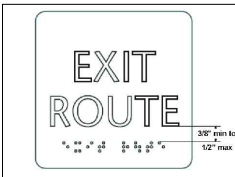
CROSS HATCHED FIXTURES ARE AT LOCATIONS SHOWN ON PREVIOUS DRAWINGS AND PIPING SHALL BE USED FOR FIXTURES SHOWN. URINAL LOCATION SHOWN AT SOUTHWEST CORNER OF ROOM D109 SHALL BE USED FOR LAVATORY IN BEDROOM D109.

## COMMON AREA SIGN NOTES

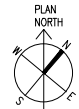
81. INSTALL SIGN DISPLAYING INTERNATIONAL SYMBOL OF ACCESSIBILITY @ 6' A.F.F. AT EACH BUILDING ENTRANCE
82. PROVIDE TACTILE SIGN WITH THE WORDS "COMMUNITY BUILDING" @ 6' A.F.F. ON THE LATCH SIDE OF THE DOOR SHOWN.
83. PROVIDE SIGN STATING "FIRE ALARM CONTROL PANEL" (VERIFY EXACT WORDING AND LOCATION WITH CITY OF VALLEJO FIRE DEPARTMENT)
84. PROVIDE SIGN WITH THE WORDS "UTILITY ROOM" @ 6' A.F.F. ON THE LATCH SIDE OF THE DOOR.
85. PROVIDE TACTILE EXIT SIGN WITH THE WORDS "EXIT" @ 6' A.F.F. ON THE WALL ADJACENT TO THE LATCH SIDE OF A SINGLE LEAF DOOR OR ON THE ADJACENT RIGHT WALL OF A DOUBLE LEAF DOOR (CBC 1117B.5.7)
86. PROVIDE TACTILE SIGN WITH THE WORDS "UTILITY ROOM" @ 6' A.F.F. ON THE LATCH SIDE OF THE DOOR.
87. PROVIDE TACTILE SIGN WITH THE WORDS "MEN" @ 6' A.F.F. ON THE LATCH SIDE OF THE DOOR SHOWN. SEE DOOR SCHEDULE FOR ADDITIONAL REQUIREMENTS.
88. PROVIDE TACTILE SIGN WITH THE WORDS "WOMEN" @ 6' A.F.F. ON THE LATCH SIDE OF THE DOOR SHOWN. SEE DOOR SCHEDULE FOR ADDITIONAL REQUIREMENTS.
89. PROVIDE SIGN WITH THE WORDS "STORAGE" @ 6' A.F.F. ON THE LATCH SIDE OF THE DOOR.
90. PROVIDE SIGN WITH THE WORDS "BUSINESS CENTER" @ 6' A.F.F. ON THE LATCH SIDE OF THE DOOR.
91. PROVIDE SIGN WITH THE WORDS "STORAGE / COPY" @ 6' A.F.F. ON THE LATCH SIDE OF THE DOOR.
92. PROVIDE SIGN WITH THE WORDS "OFFICE 1" @ 6' A.F.F. ON THE LATCH SIDE OF THE DOOR.
93. PROVIDE SIGN WITH THE WORDS "OFFICE 2" @ 6' A.F.F. ON THE LATCH SIDE OF THE DOOR.
94. PROVIDE SIGN WITH THE WORDS "FITNESS" @ 6' A.F.F. ON THE LATCH SIDE OF THE DOOR.
95. PROVIDE SIGN WITH THE WORDS "KITCHEN" @ 6' A.F.F. ON THE LATCH SIDE OF THE DOOR.
96. PROVIDE SIGN WITH THE WORDS "ILL SCIENCE PROJECT" @ 6' A.F.F. ON THE LATCH SIDE OF THE DOOR.

## TACTILE EXIT SIGN DETAILS

THE MINIMUM CHARACTER HEIGHT SHALL BE 5/8" PLUS 1/8" PER FOOT OF VIEWING DISTANCE ABOVE 72"



DRAWINGS FOR REVIEW AND BIDDING PURPOSES ONLY-NOT FOR CONSTRUCTION. SUBMIT RFI FOR CONFLICTS OR INFORMATION NOT SHOWN



## KEYNOTES

1. METAL FENCE GAS METER ENCLOSURE. SEE NORTH ELEVATION
2. LIGHTING CONTROL PANEL. SEE ELECTRICAL DRAWINGS
3. SEE E ELECTRICAL DWGS FOR TELEPHONE PANEL LOCATION
4. FIRE SPRINKLER RISER
5. WATER HEATER. SEE MECH. DWGS
6. SEE MECHANICAL DWGS. FOR HVAC UNITS
7. CONDENSER
8. PAIR 2'-0" WIDE X 6' HIGH METAL GATES
9. HANDICAPPED ACCESSIBLE DRINKING FOUNTAIN. PROVIDE HIGH AND LOW DRINKING FOUNTAIN
10. DOUBLE SINK AND GARBAGE DISPOSAL. COMPLY WITH CBC 1115B.4.7(2)
11. DISHWASHER
12. RANGE AND OVEN
13. REFRIGERATOR WITH WATER SUPPLY FOR ICE MAKER
14. 30' MIN. CLR. SPACE BELOW COUNTER
15. MICROWAVE
16. RANGE HOOD, AND FAN. MOUNT CONTROLS AT 4" ABOVE FIN. FLR.
17. BASE CABINETS
18. UPPER CABINETS
19. 60" DIAMETER FOR ADA ACCESS
20. COUNTER
21. HOLES FOR DATA CABLES
22. COPIER LOCATION
23. FILE CABINET LOCATION
24. RECESSED FIRE EXTINGUISHER (PORTABLE) - TYPICAL ONE 2A-10BC TYPE AT LOCATIONS SHOWN
25. ADJUSTABLE OPEN SHELVES
26. TV/VIDEO GAME SPACE
27. FIRE DEPARTMENT KNOX BOX.
28. not used
29. WOOD TRELLIS
30. 8' WALL MOUNTED MIRROR
31. ROOF DOWNSPOUTS
32. FABRIC AWNING
33. 6' HIGH WOOD FENCE SEE DETAIL SHEET A9.4
34. 16X16 WALL LOUVERS II AT 12' ABOVE FLR, 12" BELOW CEILING

## GENERAL NOTES

- B. ALL DIMENSIONS ARE TO FACE OF STUD OR CENTERLINE OF PARTITION WALL, INTERIOR COLUMN/ WINDOW/ DOOR UNLESS OTHERWISE NOTED.
- C. DETAILS ARE KEYED AND NOTED "TYPICAL" ONLY ONCE ON THE PLANS WHEN THEY FIRST OCCUR, AND ARE REPRESENTATIVE OF SIMILAR CONDITIONS THROUGHOUT, UNLESS OTHERWISE NOTED.
- D. PROVIDE WATER-RESISTANT GYP. BOARD AT ALL WET WALL LOCATIONS.
- E. FOR DOOR AND WINDOW KEYS REFER TO DOOR AND WINDOW SCHEDULE. SEE A9.1
- F. REFER TO INTERIOR ELEVATION FOR CABINETS CALLOUTS. SEE SHEET A2.3, A2.4 & A2.5.
- G. FOR ALL TOILETS ACCESSORIES & HEIGHTS REFER TO A2.3, A2.4 & A2.5
- H. FOR FINISH FLOOR REFER TO FINISH SCHEDULE A4.1.
- I. PROVIDE ACOUSTICAL SEALANT AT ALL WALLS AND CEILING CONDITION.
- J. PROVIDE 5/8" THK. GYP. BD. MOISTURE RESISTANT AT WET AREAS, BATHROOMS & KITCHEN SINK AREA.
- K. PROVIDE WD. BLOCKING BEHIND GYPSUM BD. PARTITION FOR ATTACHMENT FOR ALL FIXTURE, FITTINGS, ART WORK & ACCESSORIES.
- L. PROVIDE WD. BLOCKING AT CEILING FOR BLINDS AT WINDOW WHERE REQUIRED.
- M. GROUND AND FLOOR SURFACES AT ACCESSIBLE ROUTES TO BE SUP. RESISTANCE PER N. CBC. 1124.B
- N. SLOPE FLOOR DRAIN 1/4"=1'-0 SEE PLUMBING DWGS.
- O. PROVIDE WD BLOCKING IN WALL AT GRAB BAR, CABINETS, SHELVES, AND CEILINGS AS REQUIRED FOR WINDOW SHADING.
- P. PLYWOOD SHEAR WALL TO EXTEND FULL HEIGHT OF THE WALL SSD.
- Q. INTERIOR FINISHES CEILINGS & WALLS SHALL BE CLASSIFIED W/ASTM 84-TYPE "C" FLAMED SPREAD 76-200, SMOKE DEVELOPED AT 0-450. TESTED W/NFPA 286
- R. INTERIOR TRIM SHALL HAVE A MIN. CLASS C FLAMED SPREAD & SMOKE DEVELOP INDEX WHEN TESTED W/ASTM-84 AND NOT TO EXCEED 10% OF AGGREGATE WALL OR CLG. REFER TO SHEET AX.0X FOR WALL TYPE LEGEND

## LEGEND

- ONE HOUR RATED WALL. SEE DETAIL SHEET X/XX
- INTERIOR FULL HT. PARTITION. SEE DETAIL SHEET X/XX
- INTERIOR BEARING PARTITION WALL. SEE DETAIL SHEET X/XX
- FIRE EXTINGUISHER

REVISIONS		BY
9/26/2011 - PLAN CHECK	G.O.	
11/20/2013 - GAS METER	STAFF	
1/20/2014 BIDDING	STAFF	
WINDOW, DOOR MARKS ADDED.		
WINDOW, DOOR MARKS ADDED.		
DOORS MODIFIED, FLOOR FINISHES CHANGED		
3/18/2014 BIDDING	STAFF	
3/27/2014 ADA UNIT ADDED	STAFF	
FLOOR PLANS MODIFIED.		
<div><div>ARCHITECT</div><div><div>JOE OAKLEY</div><div>NO. 15457</div><div>PEN. 9-30-14</div><div>STATE OF CALIFORNIA</div></div></div>		
OAKLEY & OAKLEY ARCHITECTURAL & STRUCTURAL ENGINEERS 7700 EDGEMONT DRIVE, SUITE 615 DUBLIN, CA 94568 TEL: 925.556.6028 FAX: 925.556.6043		
PROJECT TITLE: COMMUNITY CENTER HARBOR PARK APARTMENTS 969 PORTER STREET, VALLEJO, CA 94560 DRAWING TITLE: FIRST FLOOR PLAN		
Date:	08/30/2011	
Scale:	AS NOTED	
Drawn:	STAFF	
Checked:	RY	
Job No.:	2011-09	
Sheet:	A2.1	
Of	Sheets	