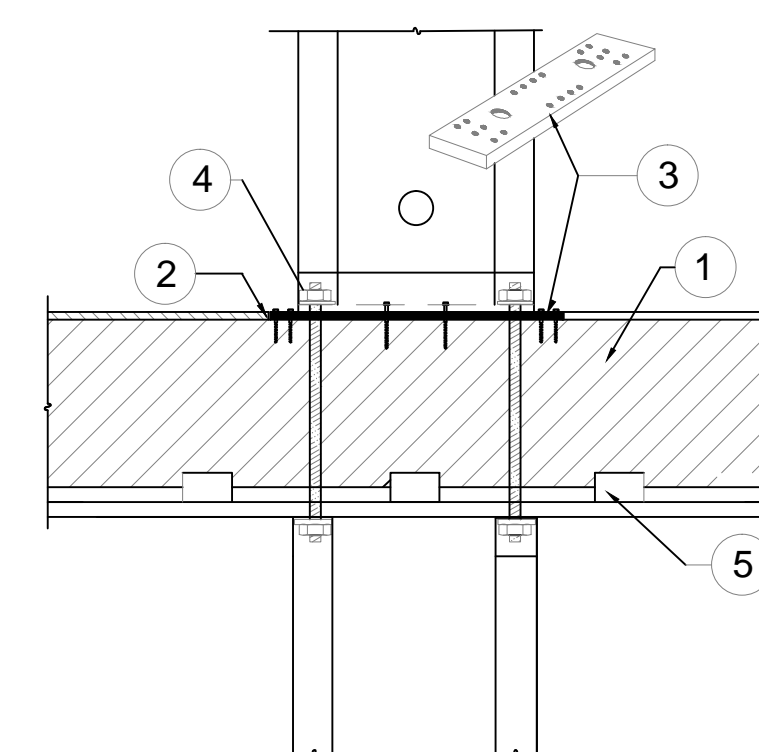


⑥



1. 4x (MIN) RIM, TABLES SPECIFY ENGINEERED WOOD PRODUCT.
2. FLOOR SHEATHING NOTCHED FOR BEARING PLATE.
3. **HARDY FRAME** BEARING PLATE (HFXPB) WITH 6 EA 1/4" DIA. x 3" (MIN) USP-W/S SCREWS (OR EQUAL) AT EACH END. WHEN MORE THAN 12 EA. SCREWS ARE REQUIRED INSTALL 1/4" x 4-1/2" (MIN) SCREWS THROUGH BASE OF PANEL.
4. 1 EA. HARDENED ROUND, 2 EA. SAE OR 2 EA. ROUND-FLAT WASHERS AND 1 EA. GRADE 8 HEX NUT AT BOTH ENDS.
5. USP MP4 F CONNECTORS OR EQUAL BY BUILDING DESIGN PROFESSIONAL

POSTS BELOW

11

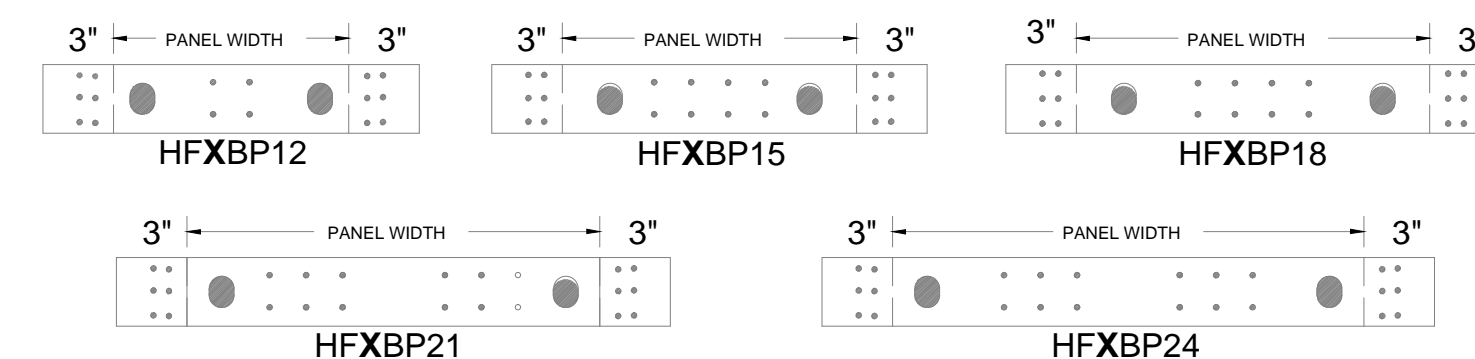
NOTE: *HARDY FRAME*® "STK" WASHERS ARE REQUIRED IN THE TOP OF PANELS WHEN CONNECTING TO A HOLD DOWN ROD FROM ABOVE. *HARDY FRAME*® "STK PANELS" INCLUDE STK WASHERS PRE-WELDED IN THE TOP CHANNEL.

- 1) Hold down bolts specified as Standard Grade (STD) must comply with ASTM F1554 Grade 36 (or equal). Hold down bolts specified as High Strength (HS) must comply with ASTM A 193 Grade B7 (or equal). HD bolts (both grades) connect to the base of the Panel above with one Hardened Round, two Flat or two SAE Washers and a Grade 8 Hex Nut (or equal). HD bolts (both grades) connect to the top channel of the Panel below with a **Hardy Frame®** Stacking (STK) Washer (may be pre-welded in a **Hardy Frame®** "STK" Panel), one Hardened Round, two Flat or two SAE Washers and a Grade 8 Hex Nut (or equal).
- 2) 1/4" diameter USP-WS Series screws (or equal). Length is 3" (minimum) when attaching directly to the collector and 4-1/2" (minimum) when installing a 2x filler above the Panel.
- 3) 1/4" diameter USP-WS Series screws (or equal). Length is 4-1/2" (minimum) through base of Panel and 3" (minimum) at **Hardy Frame®** Bearing Plate (HFXPB).
- 4) 1/4" diameter screws are required at the edges when installing a 4x filler above or when specified by the Design Professional.

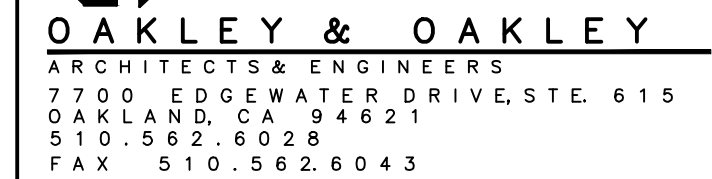
INSTALLATION ON FLOOR SYSTEMS WITH *HARDY FRAME*® BEARING PLATE (HFXPB)

- A) Install a solid 4x (min) rim in floor system below Panel. Table values assume Engineered Wood Product (EWP).
- B) Notch floor sheathing and screw ends of HFXBP to rim with 1/4x3" (min) USP "WS" Series Screws (or equal).
- C) Install Panel on HFXBP, connect with threaded rod grade specified on plans and secure base of Panel with Hardened Round Washer and Grade 8 Nut (or equal). Nuts to be snug tight.
- D) When stacking to a Panel below, "STK" Panels include "STK Washers" pre-welded in the top channel, or field install "STK" Washer, Hardened Round Washer and a Grade 8 Nut in the top channel of the Panel below.
- E) When more than 12 screws are required for minimum bottom screw quantity, install 1/4x4-1/2" Screws through Panel base and HFXBP into rim.
- F) For standard wall heights, install a 2x filler above Panel (Dtl 2-HFX2). For larger fillers see Dtl 10-HFX2.

NOTE: Installations may vary with specific job conditions and/or specifications by the Design Professional.



DETAILS AT HARDY FRAMES

RESIDENCE FOR
MR. CARL ADAMS

STRUCTURAL ENGINEERS:
OAKLEY & OAKLEY
7700 EDGEWATER DRIVE, SUITE 615
OAKLAND, CA 94621
Phone: 510-562-6028
Fax: 510-562-6043

CALIFORNIA GREEN CONSULTANT:
HASFRA BURT, AIA
2511 CASTRO VALLEY BLVD., SUITE 109
CASTRO VALLEY, CA 94546
510-830-4794



OWNER:
MR. CARL ADAMS
6333 JERILYNN AVENUE
RICHMOND, CA 94806

STRUCTURAL STEEL DETAILS

| | |
|----------------|-----------|
| Project number | 2013-63 |
| Date | 1/17/2014 |
| Drawn by | STAFF |
| Checked by | J.O. |

S5

| | |
|-------|----------|
| Scale | AS NOTED |
|-------|----------|