

180° HOOKS

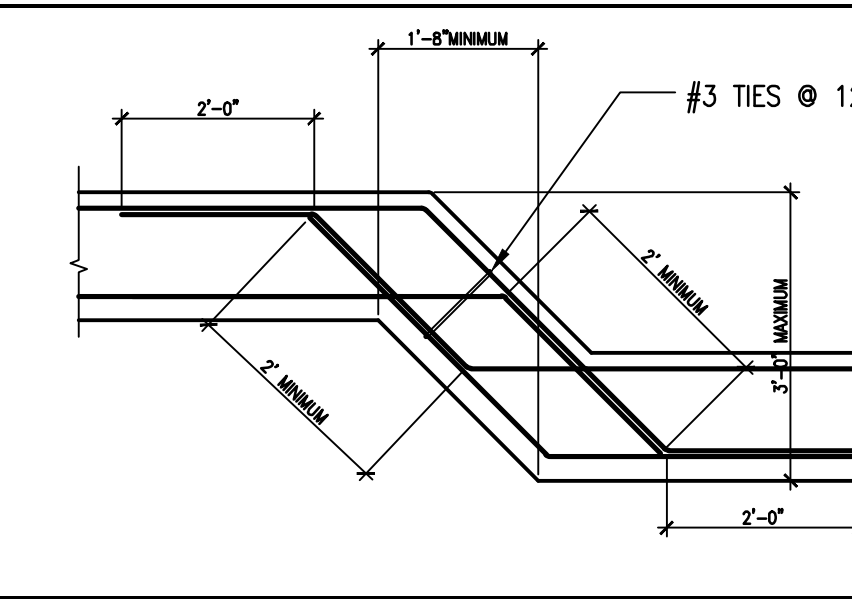
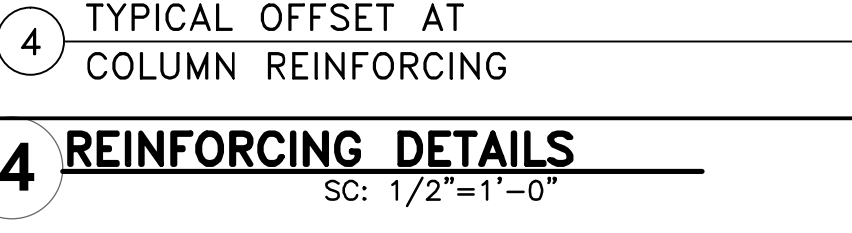
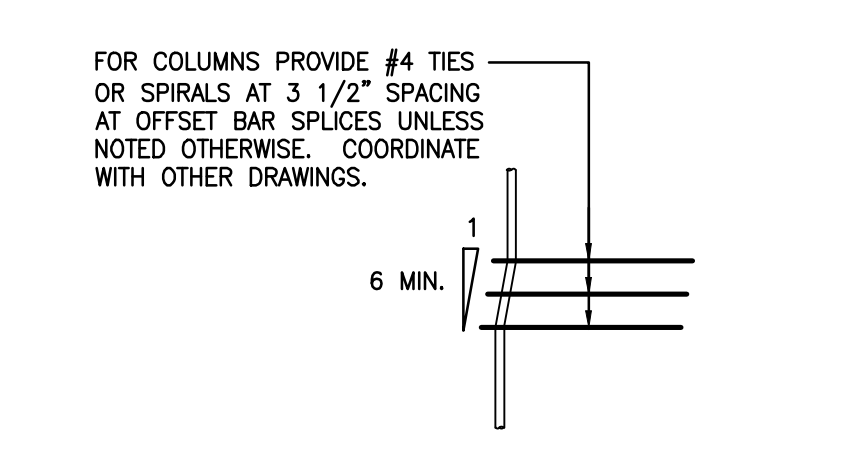
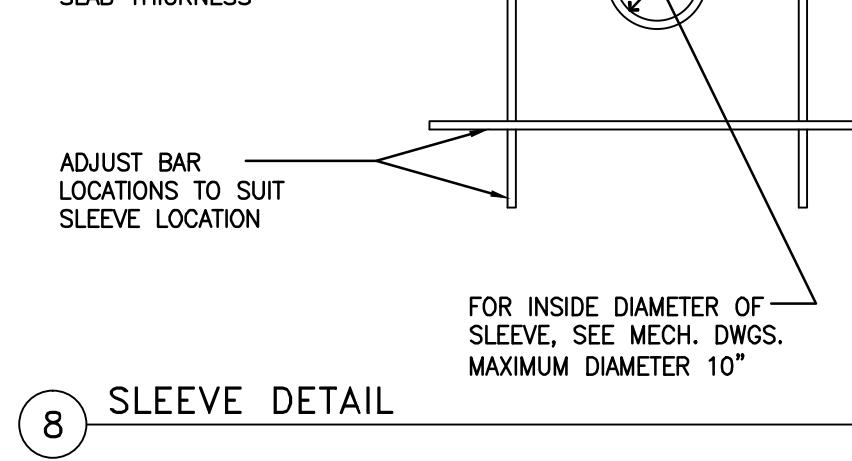
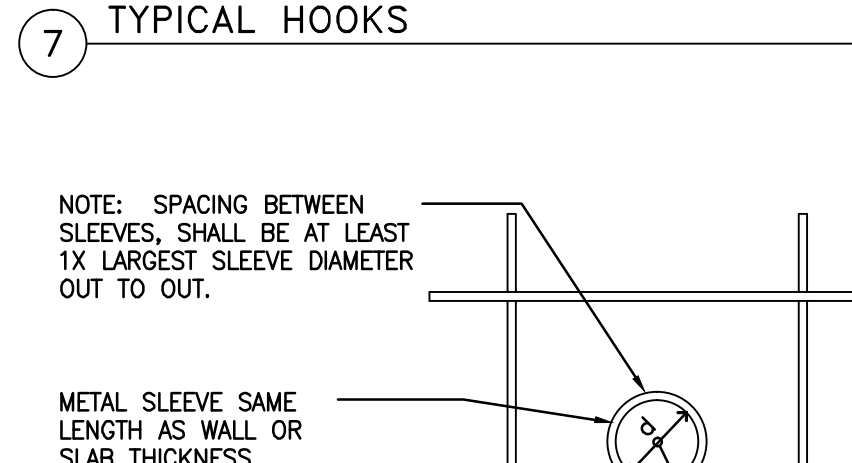
90° HOOKS

135°  
(STIRRUP/TIE HOOKS)

"D1"—FOR ALL STIRRUPS, TIES &  
WALL REINF. AT OPENINGS.

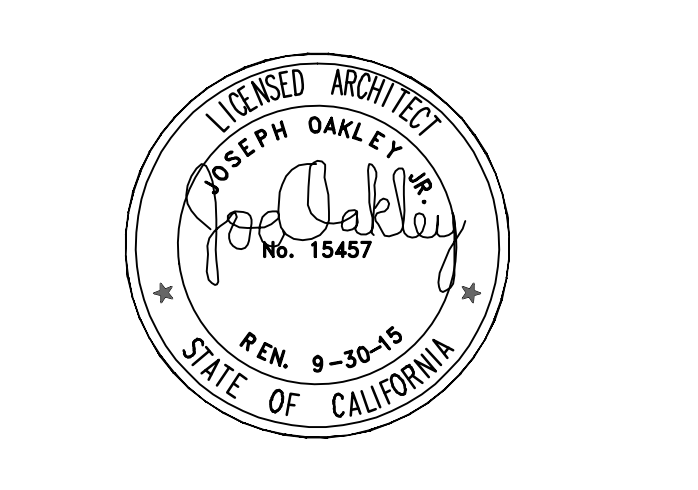
"D2"—FOR ALL OTHER HOOKS  
AND BENDS

Diagram illustrating a 24" PANEL with a span of 18-3/4" between two points.



STRUCTURAL ENGINEERS:  
OAKLEY & OAKLEY  
7700 EDGEWATER DRIVE, SUITE 615  
OAKLAND, CA 94621  
Phone: 510-562-6028  
Fax: 510-562-6043

CALIFORNIA GREEN CONSULTANT:  
HASFRA BURT, AIA  
2511 CASTRO VALLEY BLVD., SUITE 109  
CASTRO VALLEY, CA 94546  
510-830-4794



OWNER: MR. CARL ADAMS 6333 JERILYNN AVENUE RICHMOND, CA 94806	
FOUNDATION DETAILS	
Project number	2013-63
Date	11/17/2014
Drawn by	STAFF
Checked by	J.O.
S2.1	
Scale	AS NOTED